

MAY 2025



The Trudge

Sunshine Coast Bushwalking Club
Established 1975



CLUB MEETINGS

First Monday of the month (excl Jan.)

Time:

7:00pm – walk sign on opens

7:30pm – meeting commences with refreshments following

Where:

Buderim Craft Cottage
5 Main St, Buderim

Please note, when the first Monday falls on a public holiday the meeting will be held on the 2nd Monday

Committee Members 2024 -2025

President:

Linda Gregory

pres@scbwc.com

Vice President:

June Hughes

vp@scbwc.com

Secretary:

Ian Vinen

sec@scbwc.com

Treasurer:

Karen McNamara

treas@scbwc.com

Activities Coordinator:

Kate Russo

activities@scbwc.com

New Member Officer:

Maree Bell

enquiry@scbwc.com

Grants Officer:

Peter Fowler

grants@scbwc.com

Non-Committee Positions

Hire Equipment Officer:

Garry Carr

guznez6@gmail.com

Trudge Editor:

Chris Vieraitis

trudge@scbwc.com

Abseiling Coordinator

Peter Fowler

grants@scbwc.com

Librarian:

Gerard Gallop

cooroora35@gmail.com

Email enquiry@scbwc.com if you are unsure of whom to contact. They will forward your query to the appropriate individual.

Please send walk reports and photographs to trudge@scbwc.com

Members should email enquiry@scbwc.com if they are not receiving general email communications from the SCBWC.



50th Anniversary Year – A Blast from the Past.....

Another extract from an original Trudge back in 1975 just as it was written with the same type face and format.....

PROPOSED NATIONAL PARK.

Battle for a Wilderness.

We are indeed fortunate to have on our doorsteps, an area of unspoiled beauty, unique its fauna, flora and topography. The area I refer to is the Kenilworth State Forest which lies due west of the town of Nambour in South Eastern Queensland.

It is proposed that a national park, which would include the entire catchment area of Booloomba Creek, be established in this area. To date a small portion (3000 hectares or 7,500 acres) of this wild-derness has been set aside for future generations. This grant is inadequate. We submit that a further 10,000 hectares (25,000 acres) be granted to the prople of Queensland, and indeed Australia for that matter. The club's original proposal was a grant of 20,000 hectares (50,000 acres) but it was decided to reduce this request after learning that an area so large would drastically reduce logging requirements and so create unemployment. Far be it from us to add to this problem.

The head Forester at Kenilworth informed us that the Forestry Department's original plan was to cull the areas in a five year program and replace the existing timbers with other forest products. However, due to increased costs of clearing (now \$160 - \$180 per acre) this plan has been shelved and the Foresters now plan a program to be put into action in the next 18 months.

The local member for Cooroora, Mr Gordon Simpson, has agreed to take our case to Parliament. A figure of 10,000 or more signatures is aimed for on petitions to be submitted for consideration.

A few facts and Figures

The area in question has a make up of 40% Dense Rainforest
50% Thick Scrub
10% Open Scrub

Tree population consist of Eucalypts, (white gum, rose gum, spotted gum etc.) some Blackbutt, Brush Box, Tallowood, Forest Red Gum and others. Included are various palms and tree ferns. Fauna includes, red bellied black snakes, water tiger snakes, wrens, wallabies, kangaroos, echidnas, wild boar, lizards, deer (being shot) fish, shrimp, eels etc. etc. An impressive list I am sure you will agree.

This rainforest has in itself a beauty and elegance beyond description, or for that matter, photographic interpretation. It has to be seen to be appreciated. We need your help in the fight to save one of Queensland's remaining few great rainforests.

Kelvin Woodrow

BUNDAROO CREEK, KENILWORTH Comment on trip held 1st June, 1975

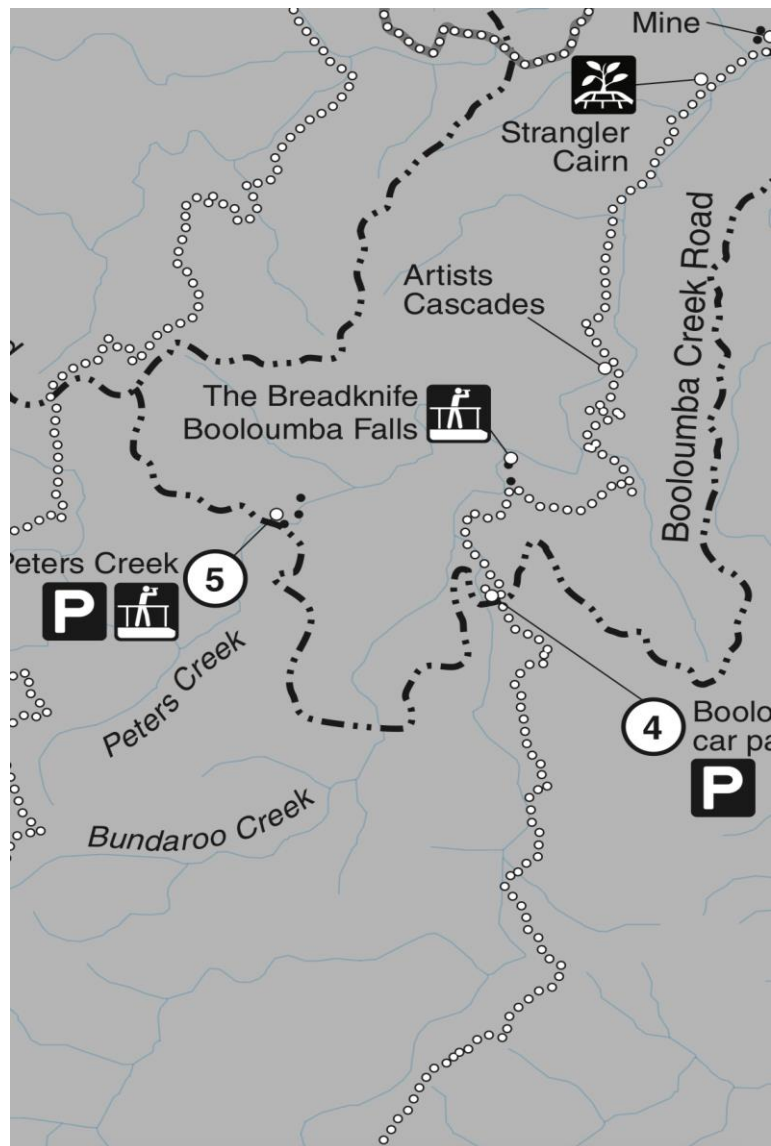
The club to date has had four walks to this area, all of which were in an attempt to reach the large falls (approx. 100ft.) that exist there.

This last walk was the only one that conquered the very steep cliffs which surround the falls. This is some of the most beautiful country in South East Queensland. Panoramic views from the top of the falls reminded me of Lamington - breathtaking in their ruggedness.

The other three trips to this region although unsuccessful in reaching the lower falls were made worthwhile by the sight of three sets of falls at the breadknife. These do not offer the same spectacular view but their beauty is something to be admired and respected. I am sure they would satisfy the needs of any bushwalker.

K. Woodrow

Modern map below added by contributor.



Grant

The club was recently awarded an Active Clubs Grant in the sum of \$2,500 from the Queensland Government, Department of Tourism, Innovation and Sport.

Funds have been contributed to club members training at the Rockit Climbing Gym, First Aid training and celebrating 50 years of club volunteering at the recent 50th celebration.

Congratulations to the 15 club members who will shortly complete their First Aid training.

A BIG thank you to our ever diligent Grants Officer, Peter Fowler.



April Activities

5 th	50 th Birthday Celebration Lunch – Peregian Springs (Rod Edwards & others)	17 th	Scenic Rim Easter Base Camp to (Peter Fowler)
6 th	Cooloolabin Trails (Doone Collins)	21 st	
13 th	Waterfall Gully (Jon Lee) - CANCELLED	25 th	Kenilworth Bluff (Sam Rowe) POSTPONED
13 th	Linda Garrett Circuit to Gheerulla Falls via Ubajee Walkers Camp (Michele Johns) – CANCELLED	25 th	Baroon Pocket Dam to Flat Rock and Return (Jackie Nair) - CANCELLED
		27 th	Noosa Trail No. 4 (Russell Stark) CANCELLED

50th Birthday Celebration Lunch



What a fantastic celebration we had for our 50th Anniversary at The Pool Café, Peregian Springs. This year marks 50 years since the inception of the club in April 1975 with a membership of 35 by September that year. The luncheon was attended by 12 past members, 53 present members which included 9 life members and 5 guests. A lovely lunch of Canape's was provided by the café, followed by very scrumptious cakes provided by Coolum Meals on Wheels and Linda Gregory.



It was lovely to see and talk to so many past members who were involved in the club in the early days. Without these people's past efforts, the club would not exist today. We need to thank Rod Edwards for going to the effort of contacting as many past members as he could so that they could attend. This really made the event a huge success and gave past members a chance to celebrate the club they have helped to grow.



Our current President Linda Gregory welcomed us all to the celebration and provided her heartfelt reflections on what it means for the club to reach its 50th milestone and in particular about the role and benefits of volunteering, as without volunteers, the club could not operate.



Rod spoke about the rich history of the club and the people involved in the early days, many of whom were there on the day. He spoke about our first President and Life member Lindsay Hope who was unable to attend, and our longest



serving member and life member, Don Burgher who was in attendance. Don joined the club in 1979 and has been a prolific leader, adventurer and volunteer for the club in numerous capacities over his 46 years as a member.



A slide show produced by Rob Shiels supported by Russell Knight, with photos from the club's inception, right through to the present day was shown during the afternoon. This was great for the older members to be able to reminisce about their time with the club and also gave current/newer members insight into the early days and how truly adventurous the early members were. I might add they were much younger than today's contingent. Much time and effort went into producing this slide show and it was greatly appreciated and enjoyed by everyone there. This slide show will be made



available at a later date and will also be shown at a future club meeting.

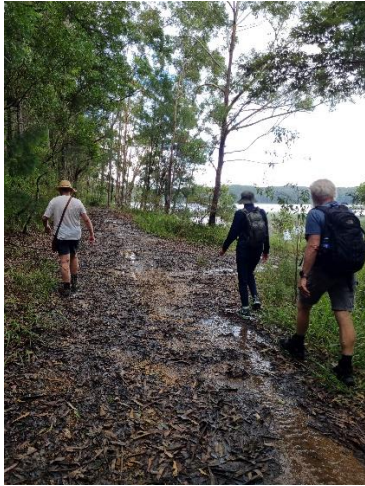
Peter Fowler provided a display depicting Committee office bearers over the last 50 years and there was also a display of extracts from past Trudge Reports, which were very interesting and provided food for conversation. The afternoon was a huge success and was enjoyed by all. We have plenty more 50th Anniversary activities throughout the year which connect us to the club's history, so look out for these on the calendar.

Karen Edwards



Cooloolabin Trails

This undulating 14km hike took our group of 8 on a lovely circuit around Cooloolabin Dam. Recent rain meant the scrub track was a tad muddy in parts and the dam spillway flow had to be crossed via the road but in general the track was in good condition.



A good mix of bush track and dirt road walking. A good distance walk for our 4 Prospective Members to chat and get to know us. Followed of course by a cuppa and continued chat at a Yandina Café.

Kate Russo

Scenic Rim Easter Base Camp



On the Thursday before Easter, 5 members arrived at a private bush block surrounded by the peaks of Edwards, Alford and Greville. The fabulous prep crew of Peter & Garry (thank you!!) had mown and whipper snipped the weekend before, so the site was perfect for pitching our tents. Once we were set up we had a lovely evening around the fire, with Mt Greville in the background and the Milky Way above. After deciding on Friday's walk we had an 'expedition' to find 'the throne' in the dark. Gold medal to Guz!



Perfect weather on Friday saw us head to Paddy's Peak in search of more gold; an easy off track walk with great views of Barney and Maroon on the ascent. Just short of the summit we followed Peter's nose to contour around to a waterfall for lunch. The trickle was enough to freshen ourselves up before we continued to contour across and down to the fire road before striking the Golden Staircase. Due to the recent rain, there was a steady flow of water over the falls and we spent a few contemplative moments before continuing our descent to the cars.



On return to camp we grew in number to 7 and were able to congratulate Garry on his magnificent throne in person.

Saturday again dawned fine and promised another warm and sunny day. The majority headed to Mt Greville, whilst others were off to tackle Mt Edwards. The carpark at Greville was full and we leap frogged with a few groups as we ascended up Waterfall Gorge, a beautiful shady gorge with palms and cool rock walls.



Arriving at a rocky outcrop (with everyone else) we had morning tea, contemplated how slacklining might work at heights before heading out to take in the view. The 'high liners' had a 200m line strung up between 2 pinnacles and were traversing with just a short safety

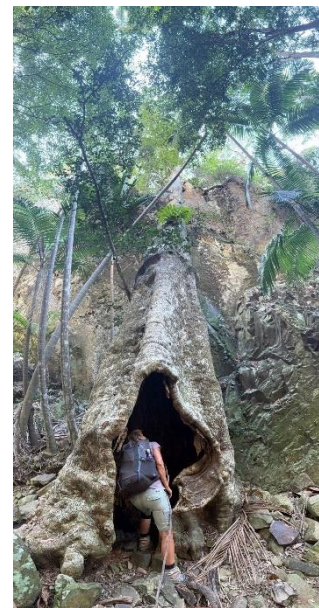


line . On a timeframe to get back for a late lunch, we continued our ascent up a steep, rough track towards the summit before descending via Palm Gorge. The narrow, cool, palm lined gorge was just what we needed to end a great day out.

On arrival back at camp we were greeted by a mob of kangaroos around the shade shelter who eyed us cautiously before continuing to graze. Another evening of chat and laughter, lots of nibbles and a great fire. Thanks Fire Wardens.



The crow alarm clock woke us early and we were off to the Mt Mathieson Trail. A relatively easy walk, the trail took us to the summit of Mt Mathieson, with views across to Cunningham's Gap and the Main Range, before a little more ascent. There was a variety of vegetation as we traversed across to Spicer's Gap. The history of the area was on display via interpretive signs and we stopped to inspect an old timber jinker that was used in the logging days. Arriving at Governor's Chair, we took in the view back over Moogerah and named a few peaks before returning to the cars via the road.



Our final evening, mirrored the others with a roaring fire and abundant stars.

A more relaxed start on Monday allowed tents to dry. We headed into Aratula for coffee and vanilla slices before making our way home. A great weekend was had by all with a lovely camp, hot showers, loo with a view, a variety of walks, perfect weather, and of course, great company. Until 2026...

Katherine Galligan

Marcoola Beach to Coolum Beach Full Moon Walk (from 14th March)

Nine of us set off at 4:30pm from the Marcoola Beach Surf Club along the beach. It was a lovely sunny afternoon and not too hot by this time. It was also soon after the severe erosion caused by Cycone Alfred, where sections of the beach had lost up to 4 meters of sand. This is a very significant loss of sand and interesting to see. In addition the heavy seas had washed up a lot of plastic waste which is very hard to walk past, so some of us were constantly bending down to pick up rubbish.



We left the beach to walk on the shaded dunes path along the Mt Coolum section then returned to the beach at the end of that path. A pair of White-bellied Sea-Eagles were coasting along with us, and Brahminy Kites were also spotted. We left the beach at Point Arkwright and had a short break, many needing to shake the sand out of their shoes.

We traversed the headland on the Pt Arkwright track that has 3 high outlook points. The horizon was clouded so we could not see the moon rise, but we got some great sunset photos. It was just on dark when we arrived at Coolum Beach, then a beautiful full moon rose over the clouded horizon, so we can say we did eventually see the moon rise!

Carolyn Farrington



UNTIL NEXT MONTH HAPPY TRAILS