

DECEMBER 2023



The Trudge

Sunshine Coast Bushwalking Club
Est. 1975



CLUB MEETINGS

First Monday of the month (excl Jan.)

Time:

7:00pm – walk sign on opens

7:30pm – meeting commences with refreshments following

Where:

Buderim Craft Cottage
5 Main St, Buderim

Please note, when the first Monday falls on a public holiday the meeting will be held on the 2nd Monday

Committee Members 2022-2023

President:

Sam Rowe

pres@scbwc.com

Vice President:

June Hughes

vp@scbwc.com

Secretary:

Neralie Carr

sec@scbwc.com

Treasurer:

Karen McNamara

treas@scbwc.com

Activities Coordinator:

Kate Russo

activities@scbwc.com

New Member Officer:

Maree Bell

enquiry@scbwc.com

Grants Officer:

Peter Fowler

grants@scbwc.com

Non-Committee Positions

Hire Equipment Officer:

Garry Carr

guznez6@gmail.com

Trudge Editor:

VACANT

trudge@scbwc.com

Abseiling Coordinator

Peter Fowler

grants@scbwc.com

Librarian:

Gerard Gallop

cooroora35@gmail.com

Email enquiry@scbwc.com if you are unsure of whom to contact. They will forward your query to the appropriate individual.

Please send walk reports and photographs to trudge@scbwc.com

Members should email enquiry@scbwc.com if they are not receiving general email communications from the SCBWC.

Grants Officer Report 2023

2023 has been another busy year for grant and partnership activities. The club was successful in being awarded a range of incentives to encourage outdoor activities.

Active Clubs Grant

The Queensland Government provided \$2000 to Sunshine Coast Bushwalkers for outdoor equipment. Equipment purchased included

- Abseiling gear
- Wheel barrow for Kirbys Road
- Garmin InReach satellite communicator
- Garmin Inreach 12 month subscription

Healthy Sunshine Coast Partnership with Sunshine Coast Council

The Sunshine Coast Council through their Recreation Trails Activation budget provided \$2000 to the club to conduct come and try bushwalks. The grant funding can be expended as the club may decide. The grant has now contributed a total of \$8000 over the past 4 years.

Sunshine Coast Council Recreation Trails Partnership for Kirbys Road Environment Reserve

In 2019 the club was funded for 3 years at \$15,000 per year (\$45,000).

In 2023 the club was funded for a further 3 years at \$15,000 per year (\$45,000). The grants funding contributes to

- Assist in maintaining the 56 kilometres of trails as part of the Conondale Range Great Walk
- Development, construction and maintenance of Kirbys Road trail network
- Continue to seek external funding for the development and maintenance of the trails
- Minimum of 2 formal trail care days per year
- Continued engagement in Healthy Sunshine Coast program
- Contribution to the club running expenses

\$3160 of each year's funding has been approved by council for the club to expend on general training and coaching \$500, administration support \$110, communications \$250, club insurance \$300 and \$2000 for providing come and try bushwalks with the \$2000 to be expended as the club may decide. Future years funding is likely to be approved by council for similar expenditure. The balance of \$11,840 was directed to expenditure at Kirbys Road.

Peter Fowler
Grants Officer

New Life Members

Congratulations – SCBWC Life Members – **Russell Stark** and **Joe Kirkpatrick**.

At the 2023 AGM two current members Russell Stark and Joe Kirkpatrick were unanimously voted in for Life Membership of the SCBCW. Under the SCBWC constitution:

Life Members - Shall be a class of membership open to all persons over the age of 18 years of age who have served the Club with distinction and given excellent service. Life membership may only be granted at an annual general meeting at the recommendation of the Management Committee and by a majority rate of 75% of the members present and entitled to vote.

Russell Stark

Joined the SCBWC in 2005 and since that time has held the management committee positions of – President (1 year), Vice President (2 years), Activities Co-Ordinator (was known as Walks Secretary for 4.5 years).

Russell has always loved leading walks in the Kenilworth area, and having club members join him on the climb UP Big Red. Russell's favourite in that area though is the Mt Allan – Spikes Hut circuit. Russell has enjoyed being in the club with people that are friendly, have a similar love of the bush and he just loves bushwalking. Bushwalking is his way of relaxation and rejuvenation. I also think that bushwalking gives Russell his weekly and yearly challenges to venture and explore further.



When you are out hiking with Russell, you will always know that he will ensure the walk is safe and in Russell's back pack will always be spare water if needed. Russell was greatly honoured by being granted Life Membership.

Joe Kirkpatrick

Joe joined the club in 2010 and his first walk with was Phil and Louise Pratt (also Life Members) to Gheerulla Circuit (near Mapleton).



Joe has been on the management committee from 2013-2021 as committee member / Equipment Officer. He was always there to support several club presidents (including me) during this time. He has led the Track Maintenance team out in Conondale National Park / Kirby's Road Environmental Reserve since 2010 and assisted the club in obtaining several grants for works in these areas. Joe has been part of 5-6 Christmas Party organising committees and currently organises the weekend base

camp the club enjoys out at Kirby Road Environmental Reserve. Joe's involvement with leading activities, assisting with Jack's Place maintenance and guidance with gear has been enjoyed by all.

Joe gets great enjoyment from walking / camping with fellow members and also in the Track Maintenance and construction he has undertaken. There is a sense of giving back to the club and the bushwalking community by being involved. Joe said that he has made wonderful friends in his time with the club and been on a few adventures and visited some beautiful country. His favourite walk for views is the Three Capes Walk in Tasmania. He has been walking in the high country in NSW / Vic a lot, but there are some special places in Townsville where he first started walking with the club up there, that he enjoyed including Paluma and Puzzle Creek / Running River. Joe took members of the SCBWC on a trip to experience these areas and found it very rewarding.

Joe said in his acceptance speech of his Life Membership at the AGM, that he was humbled to be given this acknowledgement, knowing the contributions the other Life Members had given the club.

Sam Rowe
President

November Activities

- 5th Noosa Trail #3 + #5 – Tablelands Lookout to Cooran/Pomona (Sam Rowe)
- 6th Club Meeting + AGM
- 10th Lake Weyba Wanderings (June Hughes)
- 12th Mudjimba Beach Circuit (Russell Stark)
- 19th Crummunda Cycle (Dennis Isaacs)
- 19th Obi Obi Tributary, Kondalilla NP (Peter Fowler)
- 26th Neurum Creek (Jon Lee)

December Activities

- 2nd Christmas Lunch, Valdora Community Hall
- 3rd Mapleton Day Use Area to Mapleton Falls (Helen Bernard)
- 4th Club Meeting
- 17th Glasshouse Adventure Cycle (Katherine Galligan)

Mudjimba Beach Circuit

After checking everyone in the walk commenced with just the 2 of us. The walk headed into the Mudjimba Wetlands. They still looked green, but given it was a wetland it was very dry. It was a nice peaceful walk through this nice area within this urban environment.



We made our way through this area and then crossed the road into the Novotel Resort. Back to a bit more movement. Some new building was taking place not far from the entrance. We made our way around to the central lake. People were out both around and on the lake. As we made our way around, we spotted a lizard beside a tree, which stayed put to get its photo taken. We then found our way to the Maroochy River.



Here was an off-leash area for dogs and plenty were around with some enjoying a dip. All were well behaved. The owners and many others were also around enjoying the day. We followed the river towards the beach, finding a nice spot for morning tea on the way. It was then onto the beach and with plenty of people and dogs still around we made our way up the beach and back to our starting point.



Thank you, Jan, for a nice morning walk and chat.

Russell Stark

Obi Obi Tributary, Kondalilla National Park

It was a small group who met at the National Park car park off narrows Road in light mist and cool conditions. Peter, Ross, Kate and Clare headed north west along the 'Great Walk' as if to walk to Kondalilla Falls. We quickly ascended about 80m to the lookout with views out over the creek. After such dry weather I wasn't expecting to see water flowing, but it was heartening to see the creek cascading over rocks in the Obi Obi far down below us. Continuing along the



Great Walk we dropped around 150m down, following the pathway which is narrow and switch-backed in parts. At a particular 'point' which wouldn't be obvious to casual observer, Peter took a left turn to the Obi Obi itself. A little rock-hop across (a bigger rock hop if your legs are shorter), and another short section along the creek bank and we came to the tributary/Obi Obi intersection which also looked like a nice spot for a swim.

Rock hopping up the tributary was a lesson in geology. So many fascinating rock colours and formations; the creek stone varied from white and mossy, or covered in lichens to smooth and water-worn, golden rocks, iron-red staining and the most amazing circular holes and rivulets. We were lucky enough to spot a green tree snake and watch an azure kingfisher dive into the water after some unlucky insect or fish, and another dart quickly from its nest in an earth embankment. Morning tea was had at the tributary after which we walked another half an hour up the creek before deciding to turn around. Coming back it was easier as the rocks had time to dry out, so not some much potential for slipping. The fallen trees seemed easier to navigate too – or maybe that was just me. Lunch was eaten back on the Obi Obi Creek before a hot and sweaty walk out. As usual – good company and a very enjoyable walk. I measured just under 12km with a gain and loss of 304m. Thanks to Peter for leading.



Clare Staines

Neurum Creek

Legendary leader Jon Lee lured a small band of fellow intrepids along to share his latest up-the-creek adventure. Sam, Ian, and Nick joined him on a very enjoyable excursion. From the Broadwater day-use area in d'Aguilar NP we rock-hopped a few kilometers up Neurum Creek, fought our way through a few lantana patches and notorious 'wait-a-while' murderous vegetable attacks, and negotiated a few marginally negotiable bits of rather steep river bank. We lunched at a very fine rock pool. The recent dry weather made for good progress, and we were soon on the return leg, legging it steeply up a disused road, and then down a used one, dodging the odd motorcyclist.

There was an unusual abundance of wildlife around, lots of very vocal birds and the odd marsupial - though no platypuses this day. Sam told us of the bushwalking episode of 'Bluey'.

The Blueys were very impressed by the wonders of the great outdoors apparently. I haven't watched it yet, but I'm sure she's right that we made very good Bluey bushwalkers ourselves!

Thanks Jon for another excellent day out.

Nick Collins

Crummunda Cycle

Sunday morning saw 10 eager cyclists line up at Charles Clarke Park at Mooloolaba for a morning ride along the Mooloolah River and adjacent lakes and canals. The day dawned slightly overcast, very little wind and about 25 degrees.

We headed south at an easy pace. Under Nicklin Way, alongside Parrearra Canal and a loop around the Brightwater Lake. The paths were not too busy, just a few families out enjoying their morning. After Brightwater we cycled further south, along the Western side of Lake Kawana, again passing under Nicklin Way and cruising past Bokarina Beach finishing at Crummunda Park situated beside Currimundi Lake.

A welcome break, morning tea and a chat.

At the start of the return journey we followed the same path for 2 or 3 kilometres and then rode up the Eastern side of Lake Kawana. The Lake was busy with a rowing competition. Lots a cheering and drums beating to encourage their teams.

Another short rest to watch a family of black swans sunning themselves on a little beach. One of several swan families raising their young in this area.

The team arrived back at Mooloolaba just after 11:00am, about 34 klms.

Thanks Leaders, we look forward to the next Cycle ride.

Louise and Phil Pratt

Mapleton Day Use Area to Mapleton Falls Return

Leaving Mapleton Day Use Area at 7:30am, 15 keen walkers set out for Mapleton Falls.

Heading down towards Leafy Lane we followed the Great Walk over to Linda Garrett for a short water stop and then on to the Falls. Obi Obi valley was spectacular with the little bit of recent rain. However not a lot of water was going over the falls. Morning tea was supplied by Damien, a lovely Italian Panettone cake. Making our way back, the walkers spotted a large lace monitor which posed for our photos. Several orchid lovers spotted a variety of orchids in trees and on the ground. The day was quite hot by the time we arrived back at the start around 11:30am, however most of the walk was under the cool canopy of the rainforest.

Helen Bernard



Sunshine Coast Bushwalking Club – Christmas Party 2023

Thanks to all the club members who could come along to celebrate the end of another fun year of activities in our great outdoors. The Valdora Hall is a lovely rural hall, and on a pretty hot day the breezes that come through the verandah and the hall were appreciated.

Thanks to those that helped organise and set up the day – Karen and Rod Edwards, June Hughes, Maree Bell and Michelle Freeman and Christine Casken for coming early to give a helping hand. Lunch main and desserts were delicious. Well done to the Bushwackers who won the Trivia Quiz and congratulations to our lucky door prize winners – Glenn, Maree, Russell, Christine, Phil and Michelle.



Wishing you all a lovely and safe Christmas with your family and we will do it all again in 2024.

Sam Rowe – President.

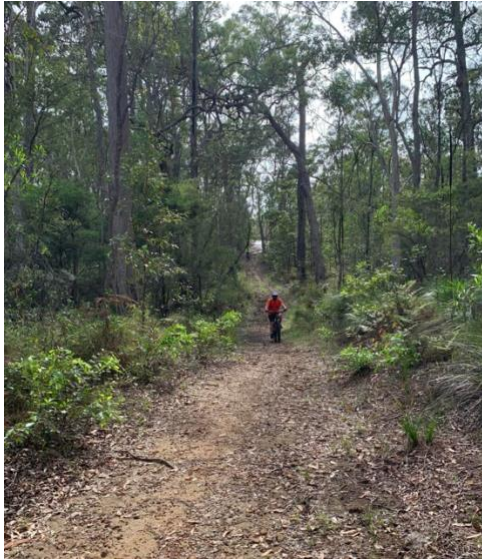
PS I realised the Round 2 Trivia Quiz answers were not given out. Here they are below.

SCBWC Christmas Trivia Quiz

1. What is the second highest mountain in QLD? - **Bellenden Kerr**
2. Of the 25 deadliest snakes in the world how many are found in Australia? - **21**
3. Which famous long-distance trail in Europe stretches across several countries including France, Italy and Switzerland? - **Tour du Mont Blanc**
4. What is the term for a natural formation that provides shelter from the elements when hiking? - **Bivvie**
5. Which Australian State is home to the Kangaroo Island Wilderness Trail? - **South Australia**
6. Which famous bushwalking trail in New Zealand is known for its ancient beech forests? - **Routeburn Track**
7. Holly, Candy, Little Joe, Sugar Plum Fair and Jackie all went on a walk where? - **The Wildside**
8. On average which Alps receive more snow. Australia or Switzerland? - **Australia**
9. What is the second highest mount in Australia - **Mt Townsend**

Glasshouse Adventure Cycle

Eight keen riders braved the heat and humidity for a 20km adventure ride around the Glasshouse Mountains. Not long after we started we lost one to a mechanical and had to send out the rescue party (thanks Una). The rest continued on, riding and walking (there were some steep, rough and slippery bits!) their way to Beerburrum, along Soldier's Settler Trail to the Tibro trailhead before returning to Glasshouse for a restorative cold drink.



GUEST SPEAKER – 5 FEBRUARY

We hope you can join us at the first meeting of 2024 because it is the first meeting of the year and also....

MALCOLM RODLEY will be speaking about the Waiheke Festival.

Start time: 7:30pm

WE NEED YOU?

We're in search of a new TRUDGE EDITOR

If you're interested in taking this on or would like more information please contact Sam Rowe.

Time commitment is 3-4hrs per month. Currently using Word to create.

UNTIL NEXT YEAR HAPPY TRAILS
WE HOPE TO SEE YOU ON THE TRACK IN 2024